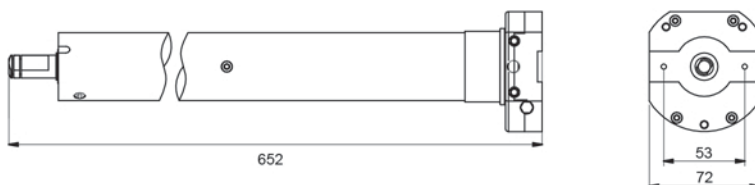


Ø50 NERO-M



Il motore tubolare meccanico NERO-M con manovra di soccorso è idoneo per applicazioni su: tapparelle e tende da sole.

The mechanical tubular motor NERO-M with manual override is suitable for: rolling shutters and sun awnings.



Caratteristiche tecniche motore / Motor technical features

CODICE CODE	DESCRIZIONE DESCRIPTION	COPPIA TORQUE	VELOCITÀ SPEED	PESO SOLLEVATO LIFTED WEIGHT	ASSORBIMENTO CONSUMPTION	CORRENTE CURRENT	GRADO DI PROT. PROT.DEGREE	GIRI FC LS ROUNDS	LUNGHEZZA LENGTH
2371118	NERO-M 30-16	30 Nm	16 rpm	55 Kg	240 W	1,10 A	IP44	30	652 mm
2371117	NERO-M 50-12	50 Nm	12 rpm	90 Kg	270 W	1,20 A	IP44	30	652 mm

Premontati sul motore / Pre-mounted on the motor



60 x 1 mm

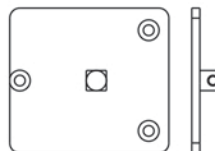


Adattatori ottagonali
Octagonal adapters

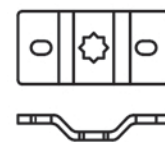
Nell'imballo / In the package



Chiave regolazione finecorsa
End limit setting key



Perno quadro
Square pin



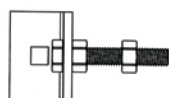
Staffa per il perno quadro + coppiglia
Bracket for square pin + cotter pin

NERO-ST - NERO-M Accessori / Accessories

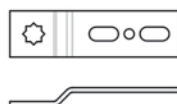
2370028



2370262



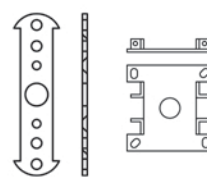
2370025



2370058



2371270



Accessori non inclusi nell'imballo motore / Accessories not included in the motor package

CODICE CODE	DESCRIZIONE DESCRIPTION
2370028	Occhiolo 180 mm per motori con manovra di soccorso / Eye outlet with 180 mm for motors with manual override
2370262	Staffa a perno quadro recupero muratura per ristrutturazioni / Bracket for the direct clutch on the existing clamp
2370025	Staffa perno quadro a stella altezza regolabile / Adjustable square pin bracket with star hole
2370058	Staffa regolabile verticalmente / Vertical adjustable bracket
2371270	Staffa minimo ingombro / Bracket minimum overall dimensions